

# Dalian Richfortune Chemicals Co., Ltd.

12A-11 Yangguang Shuma Building, 596 Huang Pu Road,

DaLian, Liaoning 116023, China

Tel: +86-411-84820922/84821539

Fax: +86-411-84821380

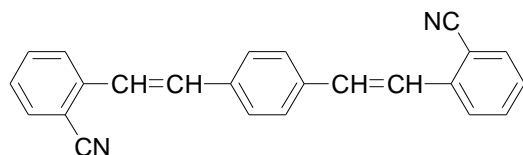
Website: [www.richfortunechem.com](http://www.richfortunechem.com)

## Optical Brightener ER-I(C.I.199)

### Introduction:

ER-I is a bisdiphenylethylene class optical brightener mainly used in polyester fiber.

### Structural Formula:



### Details :

CAS :13001-40-6

Molecular Formula:  $C_{24}H_{16}N_2$  Molecular Weight : 332

Appearance: Yellowish-green crystalline solid

MP: 230-234°C Purity: 99%

### Properties:

ER-I is a whitening agent for polyester. It is non-toxic, odorless, non-ionic and soluble in most of organic solvents. Product Whitened by ER has a natural pure white appearance. Being stable in chemical properties and characterized by strong high-temperature resistance and light stability, ER is one of the most ideal whitening agents generally accepted internationally for polyester fiber

### Applications:

ER-I in the form of refined powder is very suitable for whitening and brightening polyester fiber by high temperature dyeing. and has good whitening effect on plastics such as PE,PP and PVC and their process of shaping with polyester chips or recovered polyester chiaps .In addition, the refined powder is widely used in coating industry.

### Method of usage:

1 : pad-dyeing hot melt process:The recommended loading concentrations 1 ~ 4g/L

technological process : padding----preure(100 )----postcure ( 185--200 ,20-30seconds ) ,

impregnation liquid pH is 4~5.

2 . high temperature dyeing. The recommended loading concentrations 0.1 ~ 0.4%(o.w.f), bath ratio :



# Dalian Richfortune Chemicals Co., Ltd.

12A-11 Yangguang Shuma Building, 596 Huang Pu Road,

DaLian, Liaoning 116023, China

Tel: +86-411-84820922/84821539

Fax: +86-411-84821380

Website: [www.richfortunechem.com](http://www.richfortunechem.com)

---

1 10~ 30; dyeing temperature : 120 ~ 130 ,pH: 5 ~ 10depending on substrate, processing conditions, and long-term stability requirements.

Please Noted: above recommended loading can be a reference. Exact loading must be determined by compositions of the specific polymer system

**Package:** 25kg complex paper bag or fiber drum.